

### Product Specification

#### Material

Brass Material, White & Chrome Finished

#### Product Capability

Cartridge : Mixer Ceramic Cartridge Sedal  
 Durable test : 70.000 cycles  
 (Based on EN817 : 2008)  
 Maximum Pressure : 7 kg/cm<sup>2</sup>  
 Maximum Temperature : 90°C  
 Working Pressure : ½ - 4 kg/cm<sup>2</sup>

#### Package Include

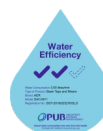
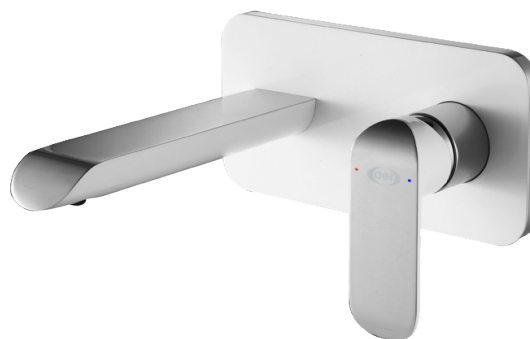
Brass Body  
 Frame  
 Handle  
 Spout  
 Seals

#### PUB Approved

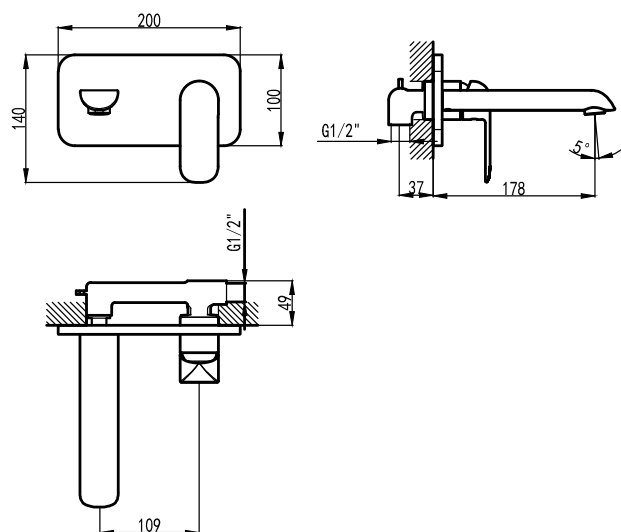
Water Efficiency : Very Good ✓✓  
 Water Consumption : 3,00 liter/min  
 Registration No : BST-2018/025276/SLS

#### Product Features

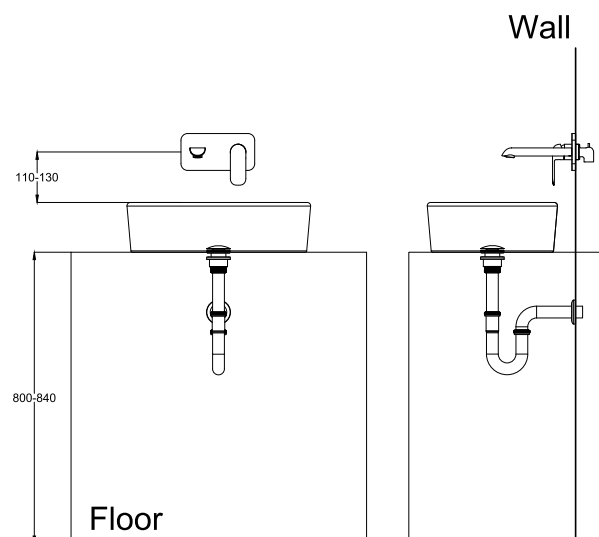
Hot & Cold  
 NEOPERL® Aerator  
 Powder Coated Painting



### Technical Drawing



### Installation Details



*Disclaimer : While we endeavor to provide the most accurate, up-to-date information available, the content on this document may be change due to requirements in different sites, markets and/or countries, out of date or include omissions, inaccuracies or other errors. All content is subject to change without prior notice.*